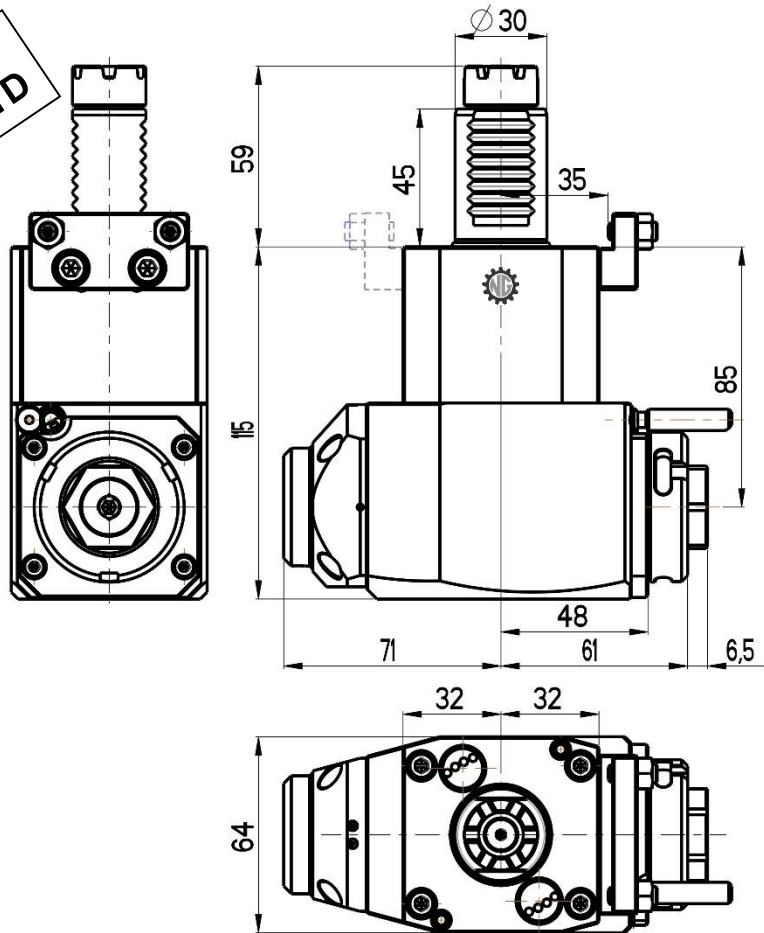




# ANGULAR LIVE TOOL HOLDER

VDI 30 / TOEM 160

Product code:  
**NGT1-30/245-25/3.3-85TD**



**Max. speed:** 6000 rpm

**Max. torque:** 28 Nm

**Collet:** ER25

**Direction of rotation:** 

**Ratio:** 1:1

**Cooling:** external & internal

**Max. pressure:** 80 bar

**Bearing type:** tapered roller bearings

### Optional accessories

**Nut :** Spanner 27

**Spindle:** Hook wrench DIN 1810B 45-50

